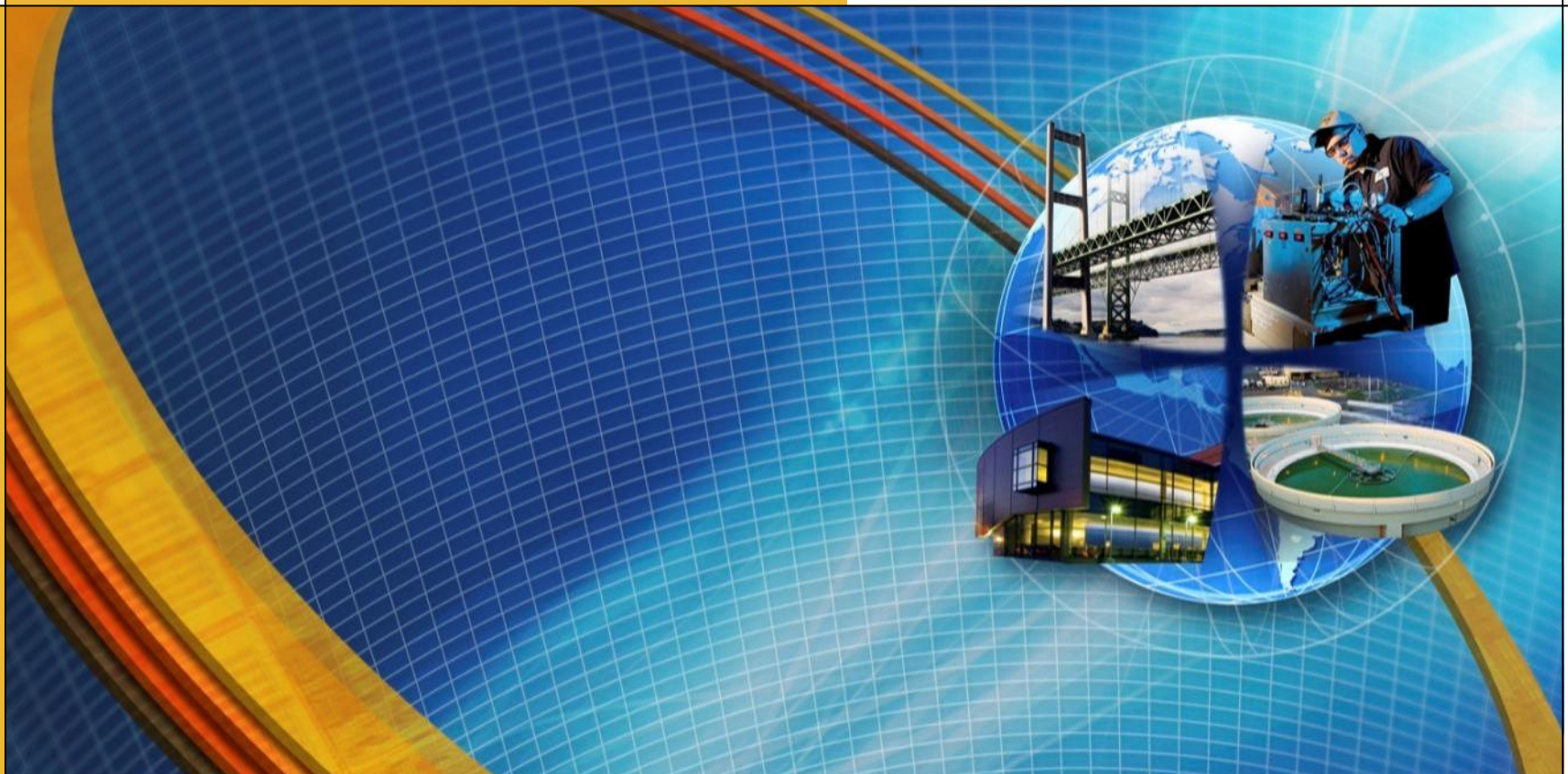


**PARSONS**

# Enterprise Risk Management





# Our Core Values

**PARSONS**



**Safety.** We maintain a safe and healthy environment in all of our offices and on each of our projects.



**Quality.** We provide high-quality services and products. We meet requirements the first time and strive for continuous improvement.



**Integrity.** We uphold our reputation for integrity and provide an ethical work place. We do the right thing each time we face a tough decision.



**Diversity.** We actively pursue diversity in our workforce, markets, and services. Technical challenges require new perspectives and open minds.



**Innovation.** Through inventive processes and unique solutions, we provide unmatched value to our customers.



**Sustainability.** We are conscious of the impact our work has on the environment. We work with customers to provide clean, efficient, healthy, effective solutions on all projects.

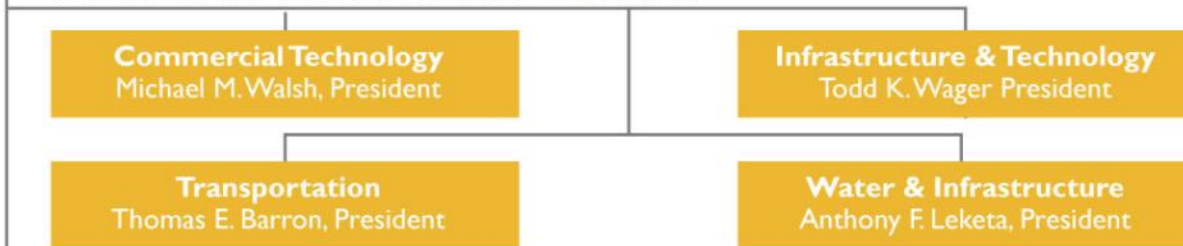


# Parsons Organization

**PARSONS**

<b>PARSONS</b>	<b>Charles L. Harrington</b> Chairman and Chief Executive	
	<b>Thomas L. Roell</b> Group Executive, Operations/Risk	<b>James R. Shappell</b> Group Executive, Development/Strategy
	<b>Chief Financial Officer and Treasurer</b>	George L. Ball, Executive Vice President
	<b>General Counsel</b>	Clyde E. Ellis, Jr., Senior Vice President
	<b>Global Shared Services</b>	John D. Thomas, Vice President
	<b>Talent Management</b>	David R. Goodrich, Vice President
	<b>Safety, Health &amp; Environment</b>	Ander D. Peters, Vice President
	<b>Corporate Relations</b>	Erin M. Kuhlman, Vice President
	<b>Government Relations</b>	Margareth C. Harper, Vice President Larry G. Schockley, Vice President

## GLOBAL BUSINESS UNITS



## REGIONAL DEVELOPMENT



### Centers:

- Corporate – Pasadena CA
- Commercial Technology – Charlotte NC
- Infrastructure & Technology – Pasadena CA
- Transportation – Washington DC
- Water & Infrastructure – Pasadena CA
- MENA – Abu Dhabi



# General Organization Stats

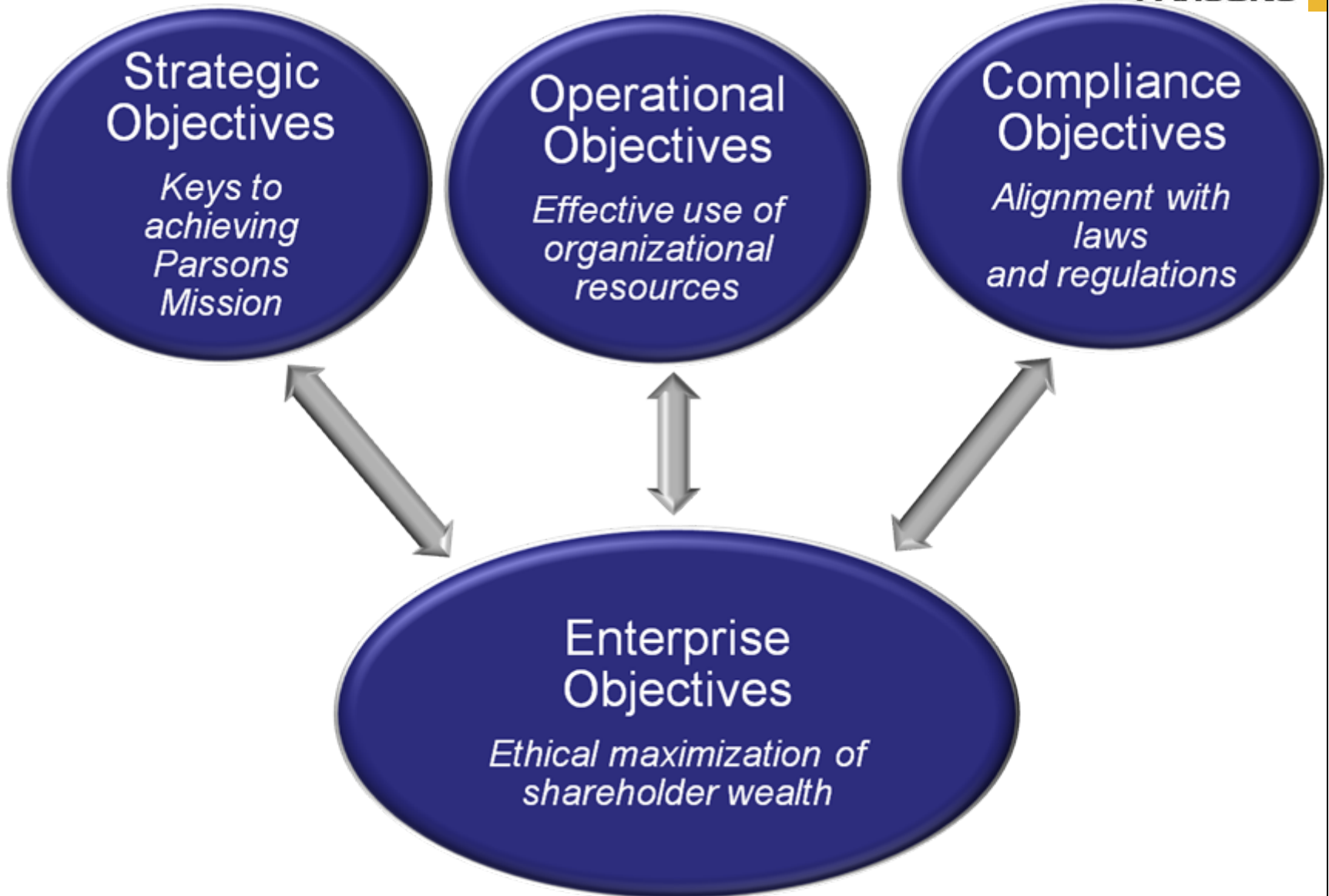
**PARSONS**

- 11,100 employees
  - Commercial Technology – 2,500
  - Infrastructure & Technology – 3,220
  - Transportation – 3,400
  - Water & Infrastructure – 1,340
  - Corporate - 650
- 4,500 projects
- 50 states
- 20 countries
- 100 offices
- 78 languages
- 100% ESOP



# Enterprise Objectives

**PARSONS**





# Path to ERM

**PARSONS**



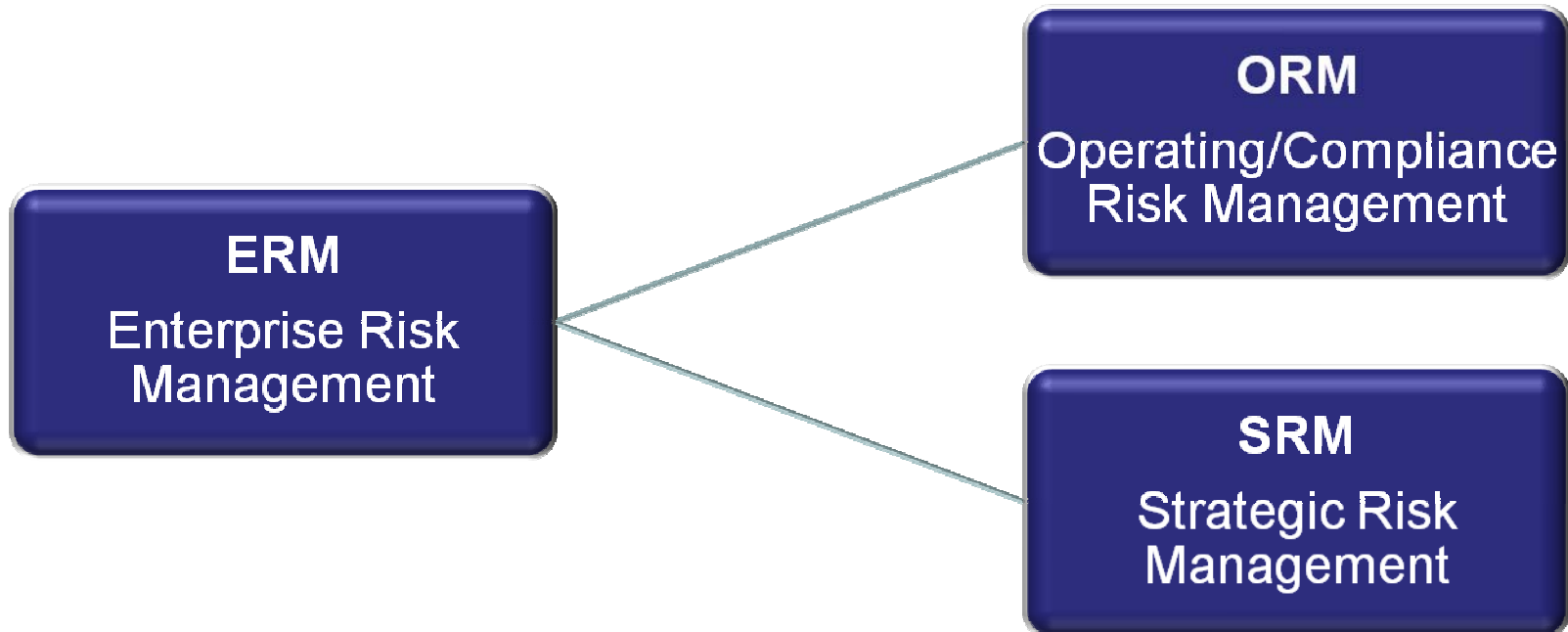


# Enterprise Risk Management

**PARSONS**

***General*** – A structured, consistent, and continuous risk management process applied throughout the entire organization

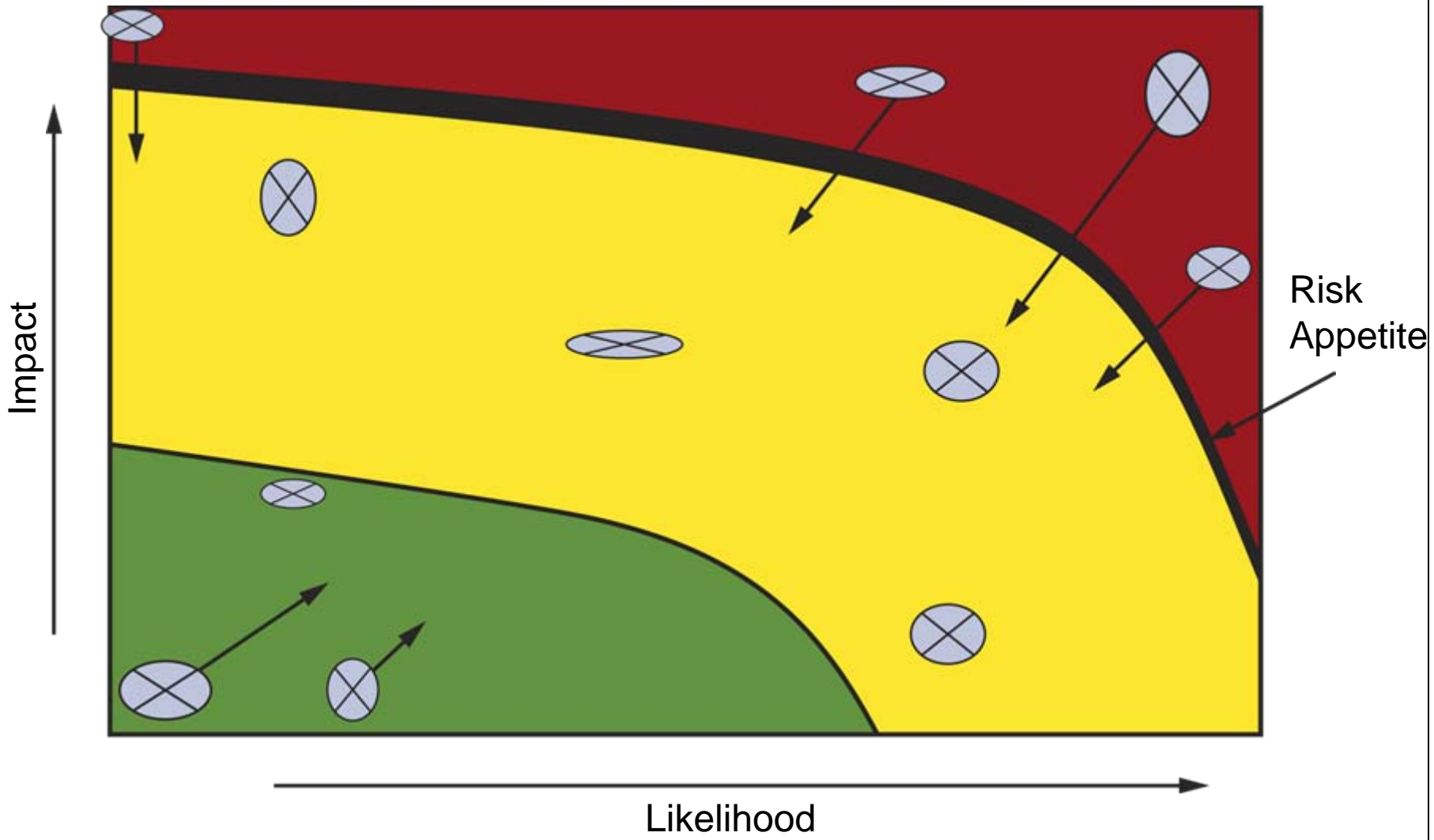
***Parsons*** – A systematic approach to mitigating enterprise risk derived from conditions or events which threaten the attainment of Parsons operating/compliance or strategic objectives





# Risk Portfolio in Relation to Risk Appetite

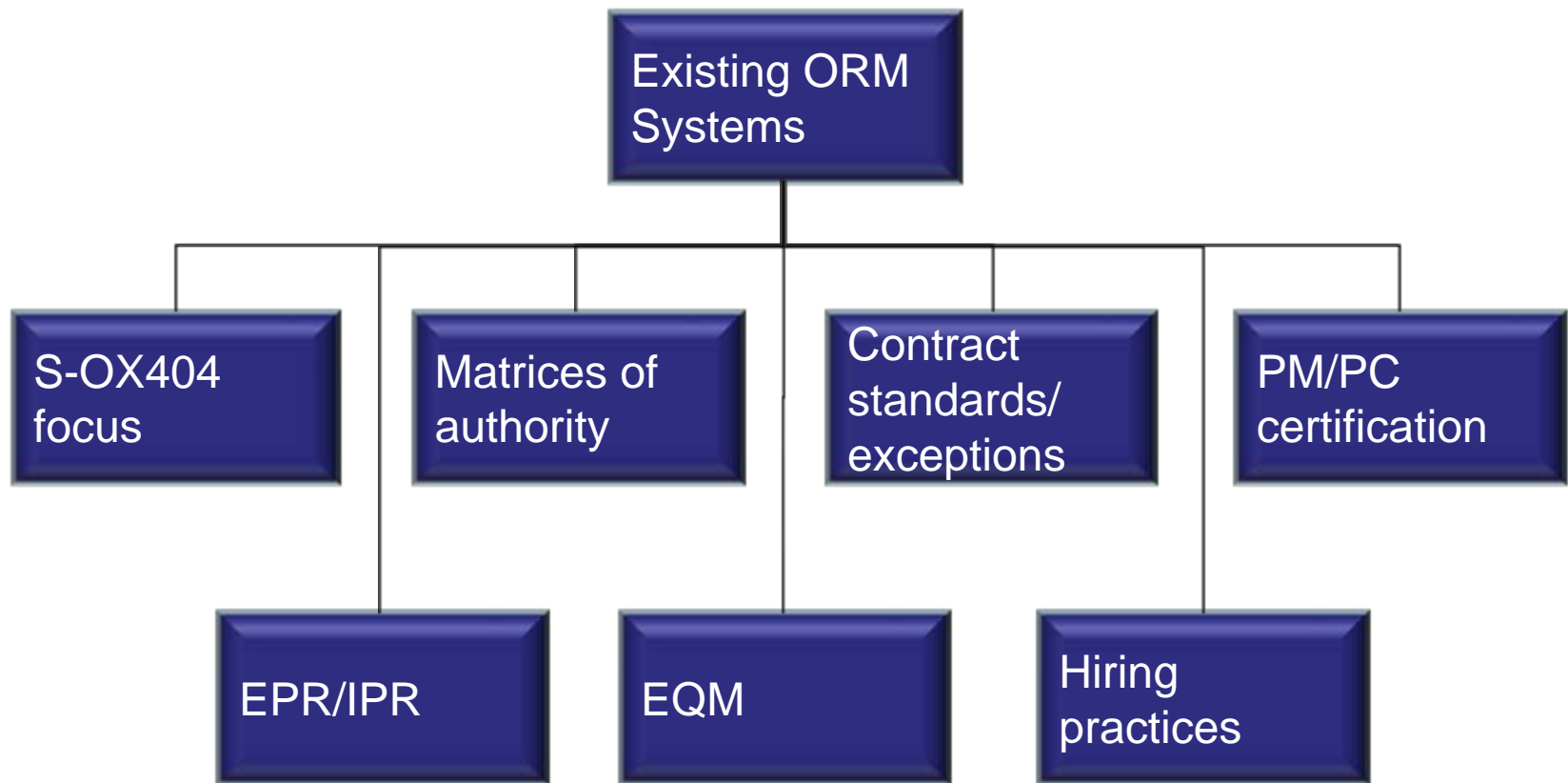
PARSONS





# ORM Mitigation System Examples

Imbedded in policies, procedures, and practices.





# Key SRM Concepts

**PARSONS**

**Management/Subject Matter Expert brainstorming**

**Not a “procedure,” but a mindset**

**Requires full/open communication – collaboration**

**Top-down focus, bottom-up communication**

**Not fixed – key is adaptability/responsiveness**



# Organization and Authority Structure

PARSONS

